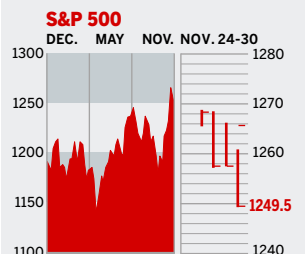


Personal Business Figures of the Week

STOCKS

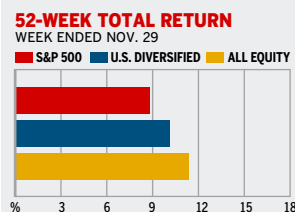
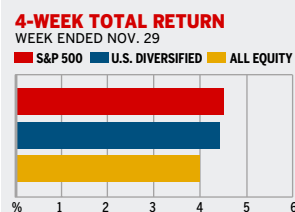


COMMENTARY

The indexes hit new highs on Nov. 25 before falling the next few days on light volume and worries that the Fed may tighten in the face of a resilient economy. Retailers, traditionally gloomy as the shopping season starts, have been cheered by the drop in gas prices and jump in consumer confidence. Look for an end-of-year stock rally, market watchers say.

Data: Bloomberg Financial Markets, Reuters

MUTUAL FUNDS



Data: Standard & Poor's

U.S. MARKETS

	NOV. 30	WEEK	% CHANGE YEAR TO DATE	LAST 12 MONTHS
S&P 500	1249.5	-1.3	3.1	6.4
Dow Jones Industrials	10,805.9	-1.0	0.2	3.6
NASDAQ Composite	2232.8	-1.2	2.6	6.5
S&P MidCap 400	733.7	-1.0	10.6	15.1
S&P SmallCap 600	354.3	-0.8	7.8	10.0
DJ Wilshire 5000	12,496.6	-1.2	4.6	8.2

SECTORS

	NOV. 29	WEEK AGO	YEAR AGO	LAST 12 MONTHS
BusinessWeek 50*	749.7	-1.5	6.4	9.3
BW Info Tech 100**	381.5	-0.6	2.2	6.1
S&P/BARRA Growth	598.3	-1.1	2.8	6.3
S&P/BARRA Value	646.8	-1.4	3.4	6.6
S&P Energy	371.0	-2.8	28.5	25.9
S&P Financials	425.9	-2.0	3.6	7.8
S&P REIT	154.8	-1.0	7.2	11.4
S&P Transportation	247.3	-0.7	2.4	5.4
S&P Utilities	158.4	-0.7	11.8	14.5
GSTI Internet	207.9	-1.3	16.6	27.3
PSE Technology	840.5	-0.6	7.9	11.9

*Mar. 19, 1999=1000 **Feb. 7, 2000=1000

GLOBAL MARKETS

	NOV. 30	WEEK	% CHANGE YEAR TO DATE	LAST 12 MONTHS
S&P Euro Plus (U.S. Dollar)	1450.6	-0.8	3.8	9.5
London (FT-SE 100)	5423.2	-2.0	12.6	15.3
Paris (CAC 40)	4567.4	-0.9	19.5	21.7
Frankfurt (DAX)	5193.4	-0.1	22.0	25.9
Tokyo (NIKKEI 225)	14,872.2	1.1	29.4	36.5
Hong Kong (Hang Seng)	14,937.1	-0.8	5.0	6.2
Toronto (S&P/TSX Composite)	10,824.1	-0.9	17.1	19.9
Mexico City (IPC)	16,831.0	0.7	30.3	39.1

FUNDAMENTALS

	NOV. 29	WEEK AGO	YEAR AGO
S&P 500 Dividend Yield	1.81%	1.80%	1.96%
S&P 500 P/E Ratio (Trailing 12 mos.)	18.5	18.5	19.8
S&P 500 P/E Ratio (Next 12 mos.)*	15.1	15.1	16.4
First Call Earnings Revision*	-1.99%	-2.27%	-0.19%

*First Call Corp.

TECHNICAL INDICATORS

	NOV. 29	WEEK AGO	READING
S&P 500 200-day average	1204.3	1203.1	Positive
Stocks above 200-day average	61.0%	61.0%	Neutral
Options: Put/call ratio	0.69	0.70	Neutral
Insiders: Vickers NYSE Sell/buy ratio	3.13	2.90	Negative

BEST-PERFORMING GROUPS

Group	LAST MONTH %	LAST 12 MONTHS %
IT Consulting	20.4	66.8
Paper Products	19.3	59.2
Steel	17.3	50.9
Home Furnishings	17.2	48.6
Constr. & Engineering	16.5	44.6
Oil & Gas Refining		66.8
Fertilizers & Ag. Chem.		59.2
Managed Health Care		50.9
Oil & Gas Drilling		48.6
Homebuilding		44.6

WORST-PERFORMING GROUPS

Group	LAST MONTH %	LAST 12 MONTHS %
Automobiles	-11.2	-46.5
Oil & Gas Refining	-5.7	-42.9
Oil & Gas Storage	-3.6	-26.7
Agricultural Products	-3.3	-24.2
Genl. Merchandise Chains	-3.3	-21.3
IT Consulting		-46.5
Automobiles		-42.9
Photographic Products		-26.7
Auto Parts & Equip.		-24.2
Home Furnishings		-21.3

EQUITY FUND CATEGORIES

Category	4-WEEK TOTAL RETURN %	52-WEEK TOTAL RETURN %	
LEADERS		LEADERS	
Precious Metals	12.0	Latin America	64.0
Latin America	6.2	Natural Resources	33.2
Real Estate	6.0	Diversified Emerg. Mkts.	31.7
Technology	6.0	Japan	26.9
LAGGARDS		LAGGARDS	
International Hybrid	2.1	Domestic Hybrid	6.5
Europe	2.1	Miscellaneous	7.1
Utilities	2.3	Technology	8.6
Natural Resources	2.4	Large-cap Blend	8.7

INTEREST RATES

Category	NOV. 30	WEEK AGO	YEAR AGO
KEY RATES			
Money Market Funds	3.59%	3.56%	1.50%
90-Day Treasury Bills	3.94	3.95	2.23
2-Year Treasury Notes	4.41	4.35	3.00
10-Year Treasury Notes	4.49	4.49	4.35
30-Year Treasury Bonds	4.69	4.70	5.00
30-Year Fixed Mortgage †	6.19	6.20	5.68

†BanxQuote, Inc.

BLOOMBERG MUNI YIELD EQUIVALENTS

Taxable equivalent yields on AAA-rated, tax-exempt municipal bonds, assuming a 30% federal tax rate.

Category	10-YR. BOND	30-YR. BOND
General Obligations	3.91%	4.52%
Taxable Equivalent	5.59	6.46
Insured Revenue Bonds	3.99	4.57
Taxable Equivalent	5.70	6.53

THE WEEK AHEAD

NONMANUFACTURERS' INDEX

Monday, Dec. 5, 10 a.m. EST

» The Institute for Supply Management's November nonmanufacturing activity index is expected to have eased to 59%. That's the median forecast among economists polled by Action Economics LLC. The October index rebounded to 60%, an indication that most respondents suffered only temporary disruptions from Hurricanes Katrina and Rita, while

the new orders and backlogged orders indexes showed that demand remained solid.

FACTORY INVENTORIES Tuesday, Dec. 6, 10 a.m. EST

» Manufacturing inventories in October most likely rose 0.3%, reflecting the month's rebound in production. September inventories fell for a second straight month in part because of bottlenecks resulting from the hurricanes. With demand for factory goods holding

strong, inventory levels should begin increasing once again.

INSTALLMENT CREDIT

Wednesday, Dec. 7, 3 p.m. EST

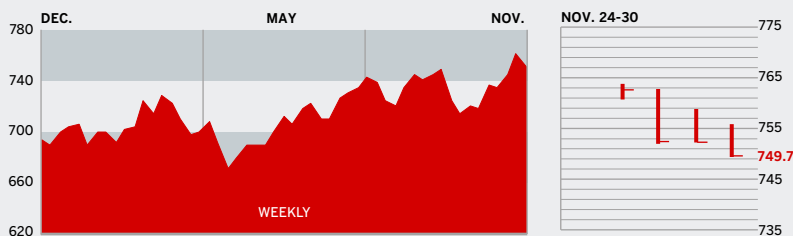
» Consumers probably took on \$4.3 billion of additional debt during the month of October, following a small September decline caused by a slowdown in vehicle sales. Depending on holiday sales, this year's increase in consumer credit could be the smallest since 1993.

The *BusinessWeek* production index edged up to 262.4 for the week ended Nov. 19, a 13.2% increase from the previous year. Before calculation of the four-week moving average, the index moved up to 263.5.

BusinessWeek online

For the BW50, more investment data, and the components of the production index visit www.businessweek.com/magazine/extra.htm

THE BUSINESSWEEK FIFTY



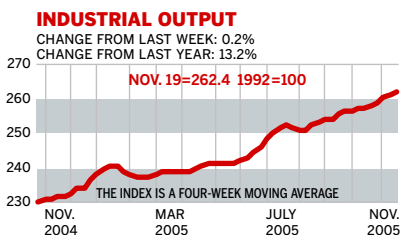
The BW50 fell behind the bigger indexes for the week. Hurt by downgrades, Yahoo slipped 5.3%; analysts are concerned about the looming showdown with search giant Google. Declining oil prices hit the energy group hard: ConocoPhillips sank 5.6%, as investors second-guessed the outfit's ambitious exploration plans. U.S. Steel soared 16.8% as analysts said the stock is cheap.

COMPANY PERFORMANCE

RANK	COMPANY	% CHANGE		RANK	COMPANY	% CHANGE	
		WEEK	SINCE 3/1/05			WEEK	SINCE 3/1/05
1	Nucor	2.4	7.6	26	Carnival	-0.3	0.2
2	ConocoPhillips	-5.6	9.1	27	Adobe Systems	-3.7	5.6
3	ChevronTexaco	-2.4	-7.7	28	Cummins	0.4	21.2
4	Valero Energy	-4.4	35.0	29	Boston Scientific	0.7	-18.9
5	UnitedHealth Group	-1.1	31.3	30	EOG Resources	0.5	57.5
6	Occidental Petroleum	0.3	12.9	31	Symantec	-0.5	-20.0
7	Exxon Mobil	-3.1	-8.3	32	Starbucks	-4.1	17.5
8	Yahoo	-5.3	24.7	33	Electronic Arts	-4.5	-12.6
9	Apache	-5.1	3.8	34	WellPoint	-2.2	25.9
10	Devon Energy	-1.9	28.7	35	Deere	2.3	-2.5
11	Pulte Homes	-3.2	6.7	36	United States Steel	16.8	-23.7
12	Qualcomm	-1.2	26.1	37	Zimmer Holdings	0.9	-27.0
13	Apple Computer	1.1	51.2	38	FedEx	-0.5	-0.2
14	Dell	-0.5	-24.8	39	Chubb	-0.8	22.4
15	Paccar	-0.6	-4.6	40	XTO Energy	-3.9	19.2
16	Coach	-4.2	24.0	41	Microsoft	-0.9	10.0
17	Sunoco	-2.7	55.8	42	Danaher	0.0	2.5
18	eBay	-3.9	4.6	43	Dow Chemical	-1.3	-18.0
19	Burlington Resources	0.1	45.6	44	Cisco Systems	0.6	0.7
20	Progressive	0.9	41.2	45	Gilead Sciences	-5.8	46.7
21	Caremark Rx	1.4	34.2	46	Nike	-2.7	-1.9
22	Caterpillar	-0.4	21.6	47	Anadarko Petroleum	-0.3	17.9
23	Phelps Dodge	5.1	27.4	48	Bank of America	-1.8	-1.6
24	Autodesk	1.3	40.5	49	Eaton	-0.5	-8.6
25	Johnson & Johnson	0.1	-5.9	50	3M	0.4	-6.5

Data: Reuters

BW PRODUCTION INDEX



The production index rose slightly. Before calculation of the four-week moving average, the index climbed to 263.5, from 262. On a seasonally adjusted basis, the index was propelled by auto production. Rail-freight traffic and coal posted modest increases with smaller gains among steel, electric-power, and crude-oil refining. Lumber and trucks were down. According to WardsAuto.com, auto makers have scaled back November truck production plans. Light truck inventories are also above the previous year's levels.

Information on each of the index components is at www.businessweek.com.
BW production index Copyright 2005 by The McGraw-Hill Companies

ONLINE RESOURCES

BW50 More information about BW50 companies is available online.

BUSINESSWEEK INVESTING Real-time market coverage and investment tools in partnership with Standard & Poor's.

MUTUAL FUNDS Search for funds, view BW ratings, and read Q&A's with fund managers.

COLUMNS Hot stocks, takeover plays, and the latest strategies for managing your money.

BusinessWeek online

For the BW50, more investment data, and the components of the production index visit www.businessweek.com/magazine/extra.htm